

Bridport Local Area Partnership – River Quality



Ian Rees

05/04/2023

Water Framework Directive

RBMP

- River Basin Management Plan (South West)

Management
Catchment

- Dorset

Operational
Catchment

- Stour / Poole Harbour / West Dorset Rivers & Coastal Streams

Individual
waterbodies

- e.g. Upper Brit, Mangerton, Asker

MTP

- Framework for the Environment Agency's Medium Term Plan

Water Companies

OFWAT /
DWI

- Overseen by Water Services Regulation Authority and Drinking Water Inspectorate, who set Price Reviews. We are in PR24.

AMP

- Water Companies set out their investment and impacts on bills in Asset Management Plans. We are in AMP7.

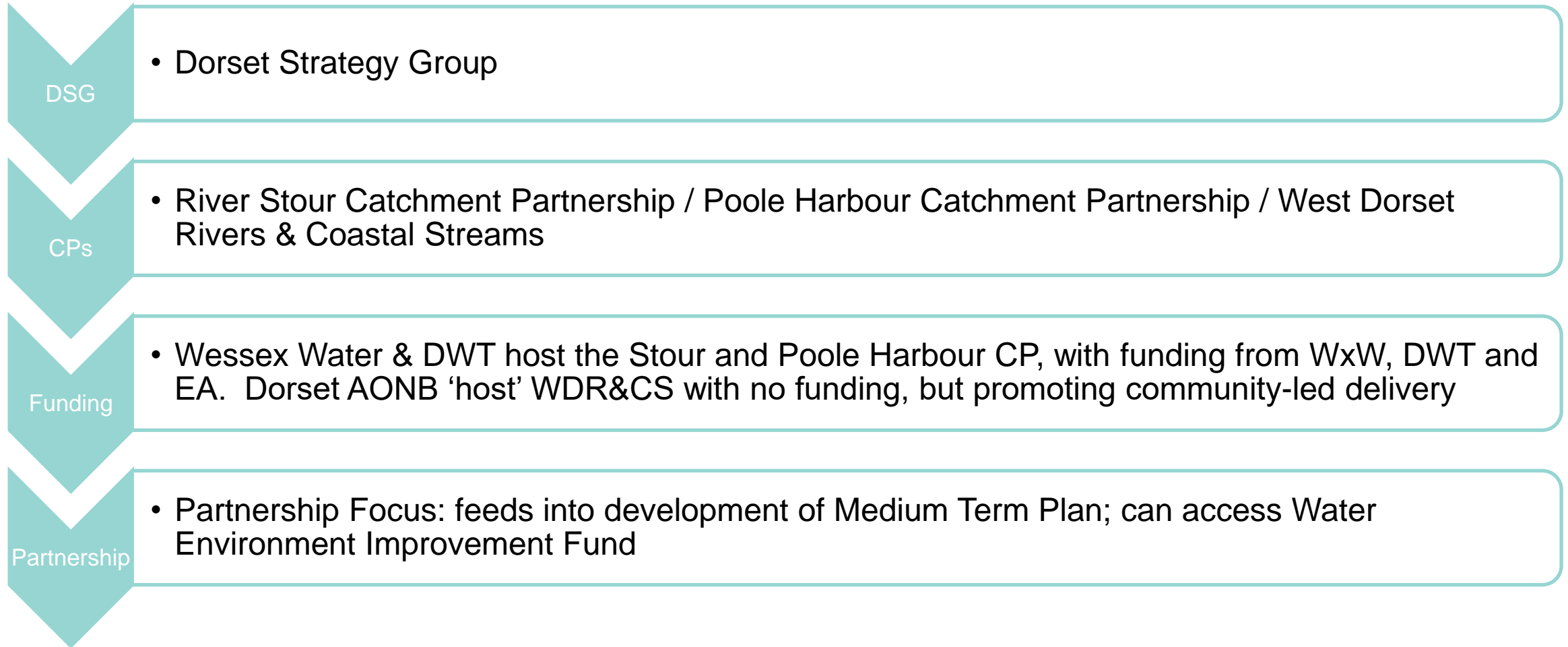
Consultation

- Wessex Water AMP is open for consultation:
<https://www.eventbrite.co.uk/e/your-water-your-say-tickets-585687606397>

CSO

- Also produces Storm Water Overflow Improvement Plan

Catchment Based Approach



Other policy

- Flood & Coastal Erosion Risk Management
- Flood Risk Management Plans
- Catchment Abstraction Management Strategy
- Lead Local Flood Authority
- Nitrate Vulnerable Zones
- SSSI management
- etc. etc.

Water Framework Directive

Brit (Upper) Water Body Moderate ecological status

Viewing latest data (Updated on 01 February 2022). [Switch to draft river basin management plan data](#)



Get Brit (Upper) data

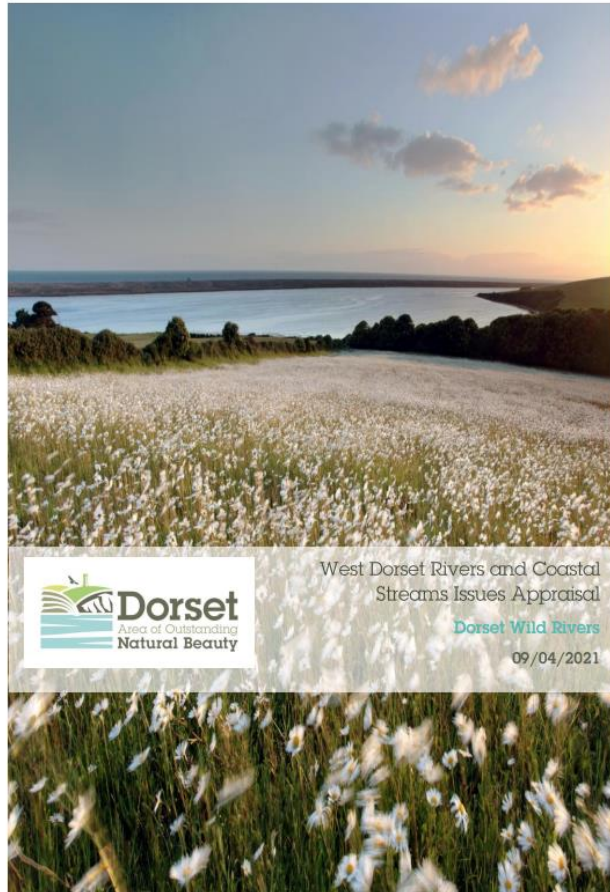
- [Download water body \(Shapefile\)](#)
- [Download water body \(GeoJSON\)](#)
- [Download classifications \(CSV\)](#)
- [Download investigations \(CSV\)](#)
- [Download challenges \(CSV\)](#)
- [Download objectives \(CSV\)](#)
- [Download protected areas \(CSV\)](#)

Related links

- [Draft plan maps on ArcGIS online](#)
- [Draft flood risk management plans](#)

Classification Item	2013	2014	2015	2016	2019
Ecological	Good	Good	Good	Good	Moderate
Biological quality elements	Good	Good	Good	Good	Moderate
Fish	Good	Good	Good	Good	Moderate
Invertebrates		Good	Good	Good	Good
Physico-chemical quality elements			Good	Good	Good
Ammonia (Phys-Chem)			High	High	High
Dissolved oxygen			High	High	High
Phosphate			Good	Good	Good
Temperature			High	High	High
pH			High	High	High
Hydromorphological Supporting Elements	Supports good	Supports good	Supports good	Supports good	Supports good
Hydrological Regime	High	High	High	High	High
Morphology	Supports good	Supports good	Supports good	Supports good	Supports good
Specific pollutants	High	High			
Copper	High	High			
Triclosan	High	High			
Zinc	High	High			
Chemical	Good	Good	Good	Good	Fail
Priority hazardous substances	Good	Good	Does not require assessment	Does not require assessment	Fail
Benzo(a)pyrene					Good
Cadmium and Its Compounds	Good	Good			
Di(2-ethylhexyl)phthalate (Priority hazardous)	Good	Good			
Dioxins and dioxin-like compounds					Good
Heptachlor and cis-Heptachlor epoxide					Good

Issues Appraisal



West Dorset Rivers and Coastal Streams Issues Appraisal

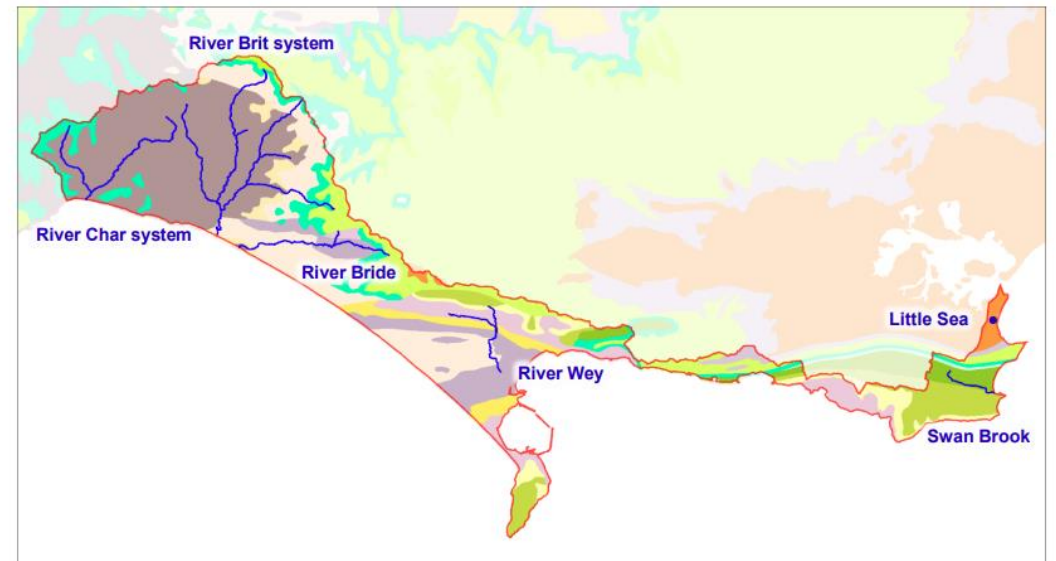


Figure 1: Map of the main rivers and geology of the West Dorset Rivers & Coastal Streams Catchment

Key

Community-led projects

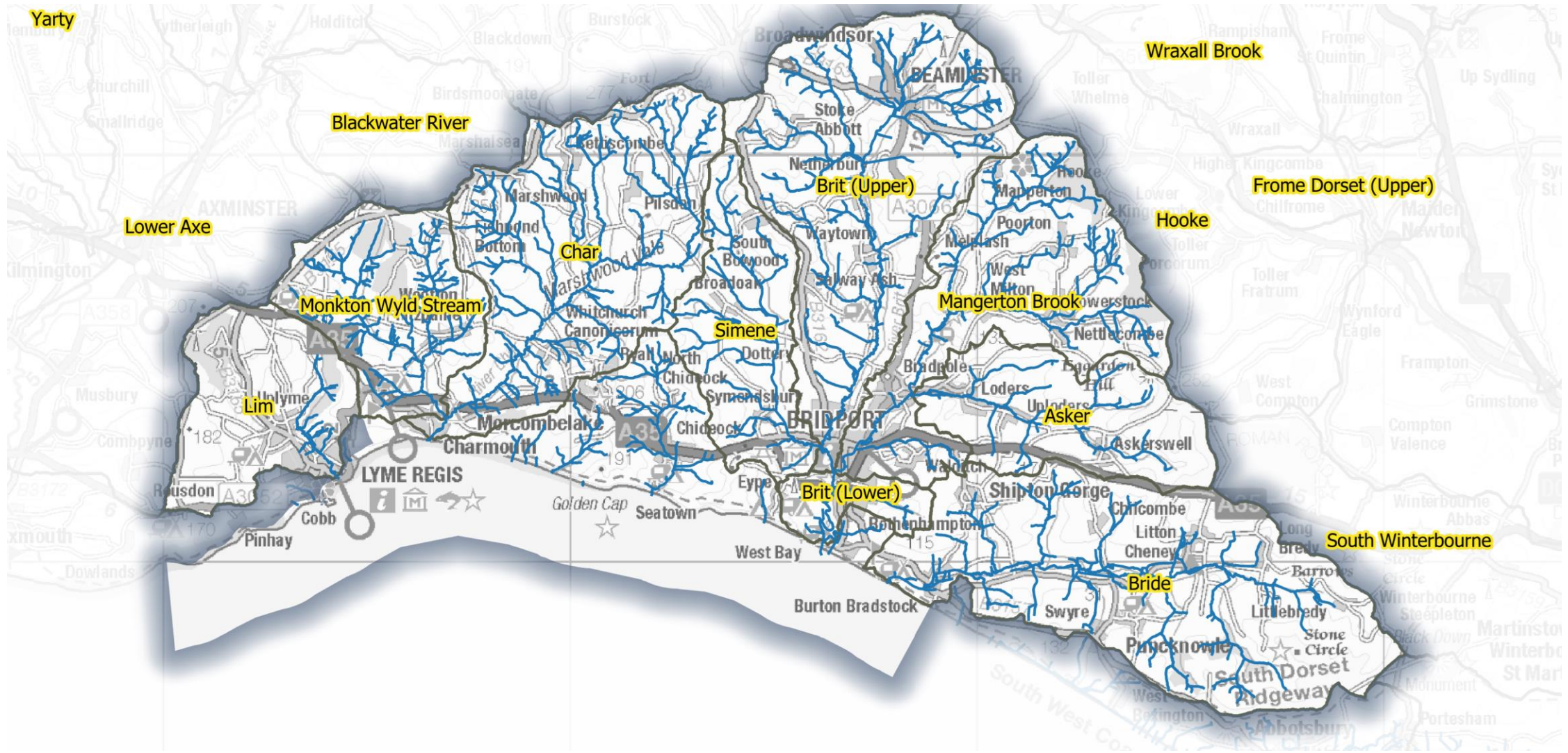
River Asker

- Over 70 people directly engaged with the project, including eight skilled citizen scientists
- 1.4km of habitat improvements.
- 3km of natural flood management covering the headwaters of the catchment.
- 15ha of improved land management and 400m of new hedges for the benefit of the water environment.
- At least 700 hours of community effort plus school engagement.
- 12km of Himalayan balsam cleared annually for three years

River Char

- 200m of river enhanced at 4 sites
- 4 volunteer sessions, restoring 100m of river and one pond
- 10 Riverfly volunteers trained
- Advice to six farms plus online workshop
- Numerous walks and talks to raise awareness of the issues

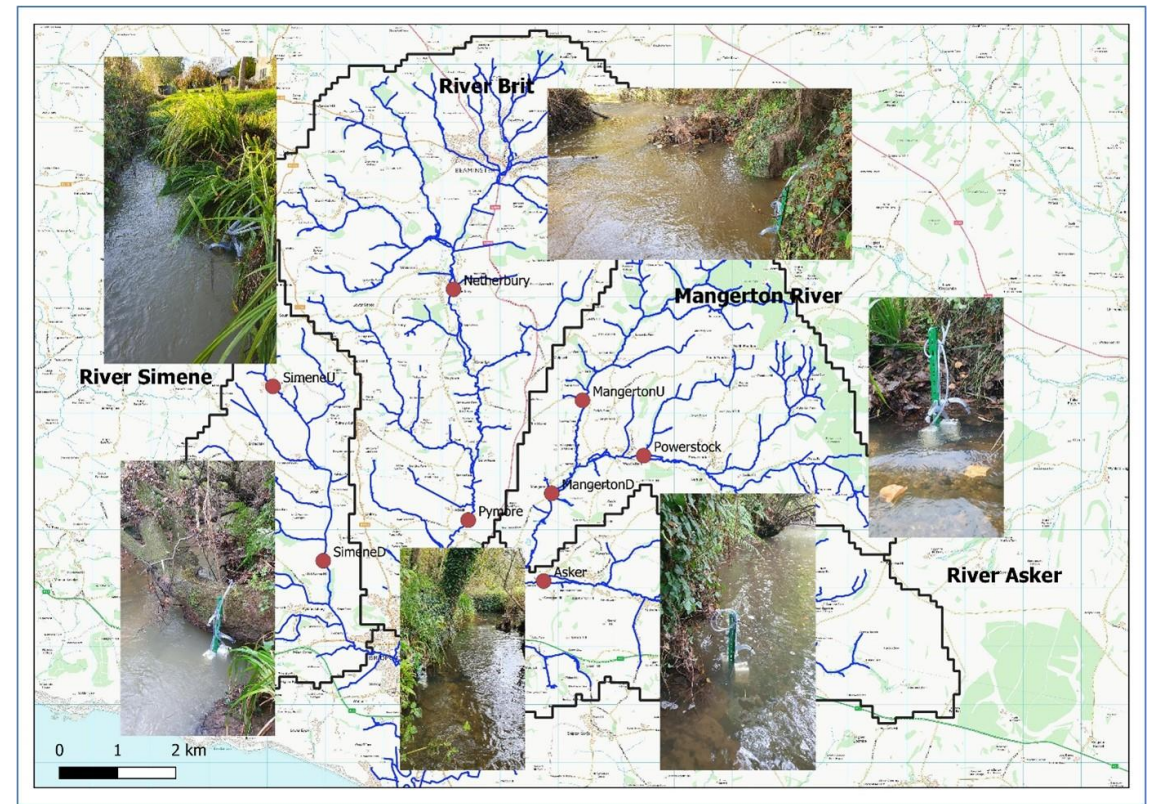
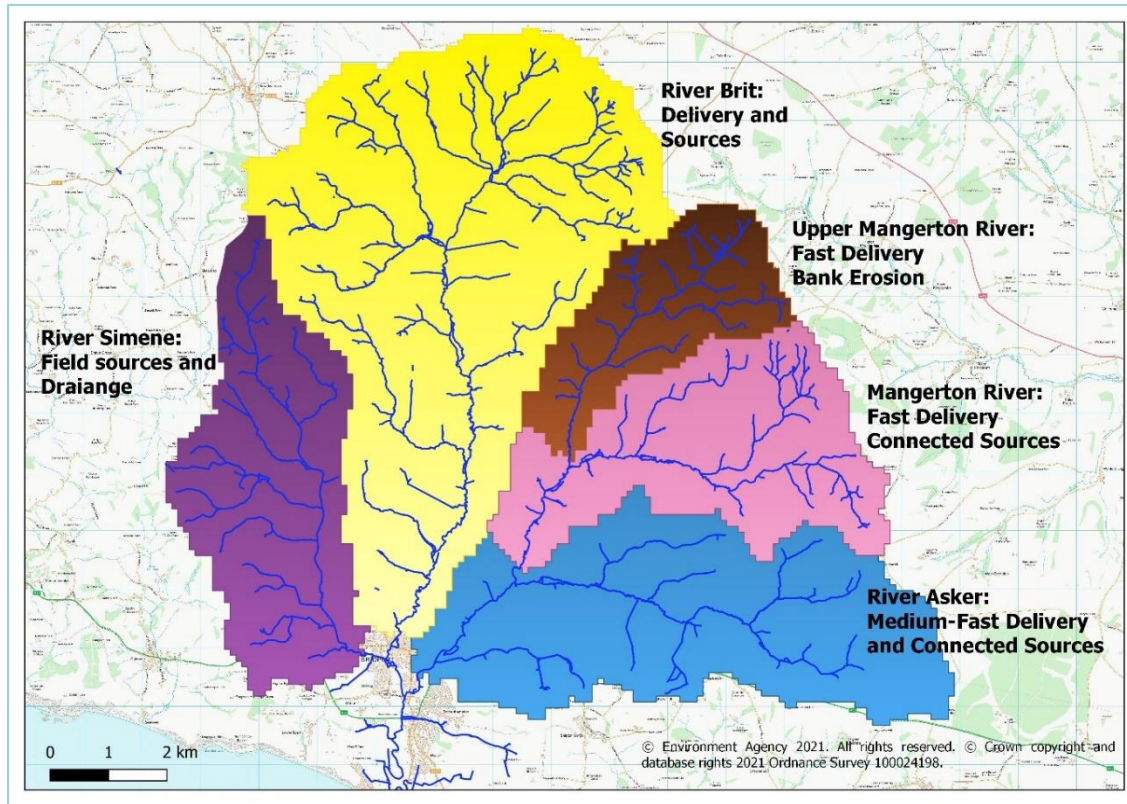
CROWD



Community Connectors

- Funding from Wessex Water's Community Connectors programme
- Looking to train 30 Citizen Scientists in:
 - CSI – chemical properties of the river (phosphate, pH, etc.)
 - Riverfly – the insect life within the river
 - River Guardians – visual assessments of water quality
 - Invasive Non Native Species – e.g. Himalayan balsam and North American Mink
 - Riparian mammal – e.g. otter and water vole
- Aim to help improve our understanding of our local rivers

Sediment



Sources of data

- <https://www.dorsetaonb.org.uk/project/rivers/>
- <https://environment.data.gov.uk/catchment-planning>
- <https://environment.data.gov.uk/ecology/explorer/>
- <https://data.catchmentbasedapproach.org/pages/explore-data>
- <https://explorer.geowessex.com/>
- <https://wessexwater.maps.arcgis.com/apps/MapSeries/index.html?appid=e371301c24ca4228b36db3a3a6ba8560>
- <https://telemetry-data.com/open>