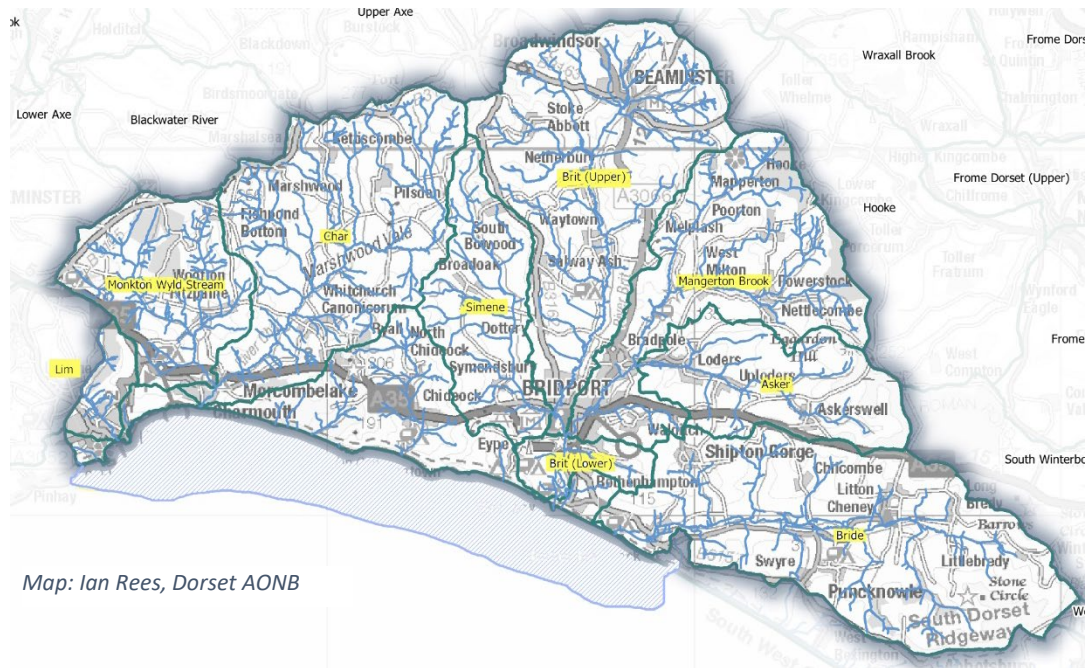


CROWD: Clean Rivers Of West Dorset



Map: Ian Rees, Dorset AONB

With reference to the CROWD area (from the River Lim in the west to the River Bride in the east, including all river catchments, smaller coastal streams and the coastal marine environment of Lyme Bay into which these waters discharge), **CROWD asks Wessex Water to:**

1. Supply details of the budgets, priorities and schedules for its 2025-30 Asset Management Plan.
2. Supply full sewage release data for 2022 and, at least quarterly, from Jan. 2023 onwards, including:
 - the date, time, duration and volume of each release (including unpermitted releases) to marine and freshwater environments.
 - the duration and extent of rainfall causing a storm overflow at each site.
3. Indicate the increased storage volume needed at each overflow site to reduce releases to <10/year.
4. Identify all Storm Overflows that the company considers unsatisfactory or substandard in regulatory terms.
5. In view of the reasonable presumption that any release of untreated sewage constitutes an environmental and human health hazard, supply evidence (or, failing that, the company's reasoning) that:
 - none of its releases represents a human health hazard to year-round recreational users of rivers and coastal bathing waters.
 - none of its releases represents an environmental hazard in CROWD's protected environments [SAC/shellfishery/SSSI].
6. Identify any areas or opportunities for CROWD or its river group members to work with the company to achieve local improvements through community engagement, developing nature-based solutions or other support to Wessex Water as it seeks to meet its legal requirements.